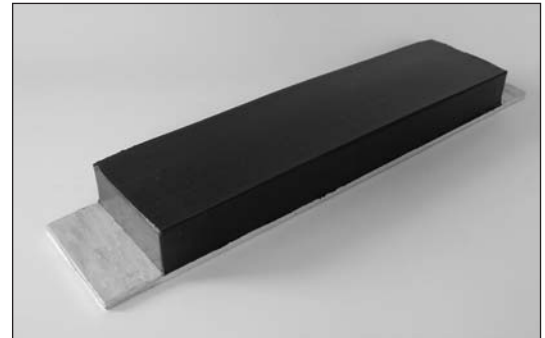


					<b>TIPPER PAD</b> A synthetic rubber pad bonded to a metal plate.			
	A	B	C	D	E	F	G	H
<b>9922/101</b>	<b>Mild steel plate</b>				<b>Weight 1.4kg/3.1lb</b>			
METRIC (mm)	355	75.0	32.0	3.00	288			
IMPERIAL (ins)	14.0	2.95	1.26	0.12	11.3			
<b>9922/103</b>	<b>Mild steel plate</b>				<b>Weight 1.8kg/4lb</b>			
METRIC (mm)	355	75.0	40.0	3.00	288			
IMPERIAL (ins)	14.0	2.95	1.58	0.12	11.3			
<b>9922/201</b>	<b>Aluminium plate</b>				<b>Weight 1.1kg/2.4lb</b>			
METRIC (mm)	355	75.0	32.0	5.00	288			
IMPERIAL (ins)	14.0	2.95	1.26	0.20	11.3			



					<b>DOOR DOVETAIL</b> Black japanned finish. Pressed steel construction.			
	A	B	C	D	E	F	G	H
<b>2468/002</b>	<b>Male</b>				<b>Weight 30g/1.1oz</b>			
<b>2468/003</b>	<b>Female</b>				<b>Weight 100g/3.5oz</b>			
METRIC (mm)	30	56	16	40	77	16	42	4.5
IMPERIAL (ins)	1.18	2.21	0.63	1.58	3.03	0.63	1.65	0.18



<b>BLACK RUBBER MATTING</b> Sold by the linear metre. Weight shown is per metre.		
<b>4307/0021</b>	<b>Castellated</b>	<b>Weight 3.5kg/7.7lb</b>
1.2 m (48") wide x 3 mm (0.125") thick 10 m (32") roll		
<b>4532/0021</b>	<b>Fine fluted</b>	<b>Weight 4kg/8.9lb</b>
1.2 m (48") wide x 3 mm (0.125") thick 10 m (32") roll.		
<b>4450/001</b>	<b>Flat, canvas reinforced</b>	<b>Weight 5.3kg/11.8lb</b>
914 mm (36") wide x 3 mm (0.125") thick Sold per metre.		

