

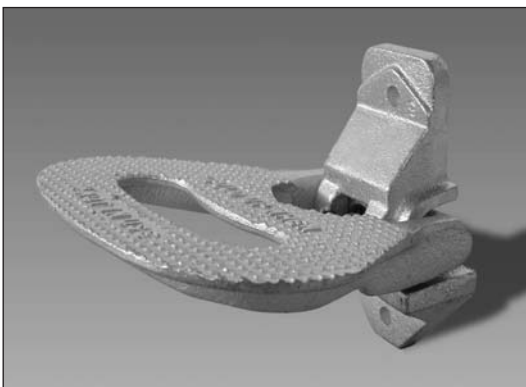
		A	B	C	D	E	F	G	H
<b>4280/001</b>		<b>Weight 660g/1.5lb</b>							
METRIC (mm)		165	140	96	4	140	95	146	117
IMPERIAL (ins)		6.5	5.5	3.78	0.16	5.51	3.74	5.76	4.61



		A	B	C	D	E	F	G	H
<b>0974/001</b>		<b>Weight 450g/1lb</b>							
METRIC (mm)		105	94	110	25.4	25.4	76	8	44
IMPERIAL (ins)		4.13	3.70	4.33	1.00	1.00	3.00	0.32	1.73



		A	B	C	D	E	F	G	H
<b>0979/004</b>		<b>304 Stainless steel</b>		<b>Weight 510g/1.1lb</b>					
METRIC (mm)		75	119	44	22	8.5	110	8.2	98
IMPERIAL (ins)		2.95	4.69	1.73	0.87	0.33	4.33	0.32	3.86
<b>0979/005</b>		<b>Black paint finish</b>		<b>Weight 520g/1.2lb</b>					
<b>0979/006</b>		<b>Zinc plate finish</b>		<b>Weight 520g/1.2lb</b>					
METRIC (mm)		73	120	45	23	10	100	8.2	98
IMPERIAL (ins)		2.87	4.72	1.77	0.91	0.39	3.94	0.32	3.86



		A	B	C	D	E	F	G	H
<b>0980/001</b>		<b>Weight 1.5kg/3.3lb</b>							
METRIC (mm)		174	130	98	28	165	48	89	8
IMPERIAL (ins)		6.85	5.12	3.86	1.10	6.50	1.89	3.50	0.32

## Steps

**UNDERFLOOR STEP**

Mild steel construction with an electro-zinc plated finish. Pressed steel treadplate steps.

	A	B	C	D	E	F	G	H
<b>5326/003</b>								
<b>Weight</b>	8.3kg/18.3lb							
METRIC (mm)	660	280	420	75	560	10.5		
IMPERIAL (ins)	26.0	11.0	16.5	2.95	22.0	0.41		



**RETRACTABLE ACCESS STEP**

Galvanised steel frame with an anodised aluminium step. Spring assisted pull-out, push-in action. Integral switch for dash mounted warning light (not included). Supplied with full fitting instructions.

	A	B	C	D	E	F	G	H
<b>5327/001</b>								
<b>Weight</b>	7.58kg/16.7lb							
METRIC (mm)	550	180	178	41.0	537	272	88.0	232
IMPERIAL (ins)	21.7	7.09	7.01	1.61	21.1	10.7	3.50	9.14



**MOTORISED RETRACTABLE ACCESS STEP**

Electro-zinc plated, mild steel construction. Operation is via 12 volt motor, mounted in a shock resistant box. Complete with an integral switch for dash mounted warning light (not included) and is supplied with full fitting instructions along with wiring diagrams.

	A	B	C	D	E	F	G	H
<b>5327/201</b>								
<b>Weight</b>	12.3kg/27.1lb							
METRIC (mm)	550	183	180	40.0	534	272	84.0	232
IMPERIAL (ins)	21.7	7.21	7.09	1.58	21.0	10.7	3.31	9.14



<b>0458/0061</b>	<b>Coarse anti-slip tape</b>	Weight 940g/2lb
	Black.	
	50.8mm (2") wide, 18.3m (60') roll.	
	Self-adhesive, single side.	
<b>0458/0067</b>	<b>Coarse anti-slip tape</b>	Weight 740g/1.6lb
	Black & yellow.	
	50.8mm (2") wide, 18.3m (60') roll.	
	Self-adhesive, single side.	

