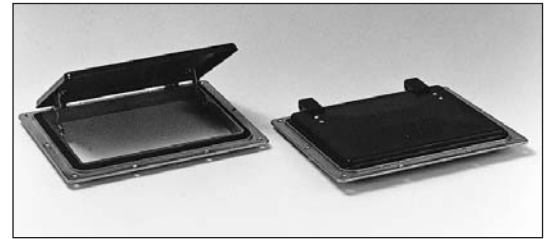




		A	B	C	D	E	F	G	H
<b>0623/001</b>		<b>Weight 870g/1.9lb</b>							
METRIC (mm)		264	213	219	167	23	4.5		
IMPERIAL (ins)		10.4	8.4	8.62	6.58	0.91	0.18		
<b>0623/002</b>		<b>Weight 1.21kg/2.7lb</b>							
METRIC (mm)		337	261	280	203	23	4.5		
IMPERIAL (ins)		13.3	10.3	11.02	8	0.91	0.18		
<b>0623/003</b>		<b>Weight 590g/1.3lb</b>							
METRIC (mm)		238	147	193	102	23	5		
IMPERIAL (ins)		9.4	5.8	7.60	4	0.91	0.2		



		A	B	C	D	E	F	G	H
<b>4468/001</b>		<b>Weight 920g/2.03lb</b>							
METRIC (mm)		275	205	239	169	56	2	4.5	
IMPERIAL (ins)		10.8	8.1	9.4	6.65	2.21	0.08	0.18	
<b>0930/001</b>		<b>Vent grill, zinc plated</b>							
<b>0930/002</b>		<b>Vent mesh, aluminium</b>							



		A	B	C	D	E	F	G	H
<b>2527/006</b>		<b>Black</b>							
<b>2527/007</b>		<b>White</b>							
METRIC (mm)		319	68.0	26.0	236	130			
IMPERIAL (ins)		12.6	2.68	1.02	9.29	5.12			



Left- Internal grill

Right- Ventilator



		A	B	C	D	E	F	G	H
<b>2527/004</b>		<b>Black</b>		<b>Weight 580g/1.3lb</b>					
<b>2527/005</b>		<b>White</b>		<b>Weight 580g/1.3lb</b>					
METRIC (mm)		240	140	120	20				
IMPERIAL (ins)		9.45	5.51	4.72	0.79				



		A	B	C	D	E	F	G	H
<b>2538/001</b>		<b>Black</b>		<b>Weight 670g/1.4lb</b>					
<b>2538/006</b>		<b>White</b>		<b>Weight 670g/1.4lb</b>					
METRIC (mm)		225	98.4	189	124	36.5			
IMPERIAL (ins)		8.88	3.88	7.44	4.88	1.44			
<b>2538/003</b>		<b>Adaptor for double skin roof</b>							



		A	B	C	D	E	F	G	H
<b>2538/007</b>		<b>Standard aperture</b>		<b>Weight 950g/2.1lb</b>					
<b>2538/008</b>		<b>Narrow aperture</b>		<b>Weight 950g/2.1lb</b>					
METRIC (mm)		260	97.5	18.75	40.0	198			
IMPERIAL (ins)		10.2	3.84	0.74	1.6	7.8			
<b>2538/0081</b>		<b>Adaptor to suit 2538/008</b>							

**SEMI-RECESSED ROOF-VENT**

Black polypropylene fan & cover with a grey powder coated, aluminium shroud. Suitable for double skinned roof. Extracts up to 400m<sup>3</sup> per hour. Supplied complete with gasket. See b49 for internal grills & switch.

	A	B	C	D	E	F	G	H
<b>2541/301</b>	12 volt				<b>Weight 1.43kg/3.2lb</b>			
<b>2541/303</b>	24 volt				<b>Weight 1.43kg/3.2lb</b>			
METRIC (mm)	318	94.0	40.0	228	56.0	3.00	244	
IMPERIAL (ins)	12.52	3.70	1.58	8.98	2.21	0.12	9.61	



**PLANT-ON ROOF-VENT**

Black polypropylene fan, with a grey polypropylene outside cover and grey powder-coated outer-shroud. Extracts up to 700 m<sup>3</sup> per hour, with a reversible motor. Complete with gasket. See b49 for internal grills & switch.

	A	B	C	D	E	F	G	H
<b>2541/021</b>	12 volt				<b>Weight 1.6kg/3.5lb</b>			
<b>2541/023</b>	24 volt				<b>Weight 1.6kg/3.5lb</b>			
METRIC (mm)	320	71.0	44.0	292	7.00			
IMPERIAL (ins)	12.6	2.80	1.73	11.5	0.28			

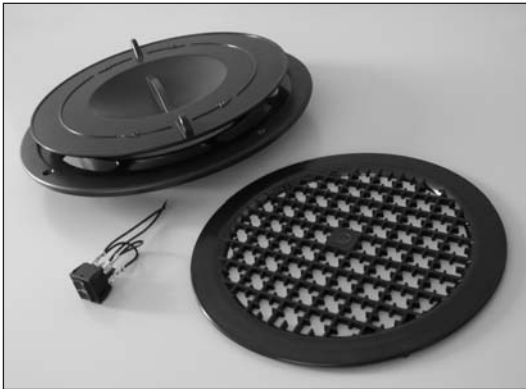


**MOTORISED ROOF VENT**

White ABS cover & roof ring. Supplied complete with gasket. Extraction rates: 850m<sup>3</sup>/h @ 2600 rpm. Reversible motor. See below for internal grills & switch.

	A	B	C	D	E	F	G	H
<b>2541/412</b>	12 volt, 80W				<b>Weight 1.7kg/3.7lb</b>			
<b>2541/424</b>	24 volt, 80W				<b>Weight 1.7kg/3.7lb</b>			
METRIC (mm)	315	385	62.0					
IMPERIAL (ins)	12.4	15.2	2.44					





Top left: 2541/1010      Bottom right: 2541/203  
Centre: 2541/201

<b>2541/201</b>	<b>3 way switch</b> Dash-mounted, on/off and direction flow switch.
<b>2541/203</b>	<b>Internal ventilator grill</b> Black plastic. Ø225mm max. with Ø205mm cutout to mount.
<b>2541/1010</b>	<b>Internal air flow unit</b> Black ABS. Ø300mm max. with Ø230mm cutout to mount.

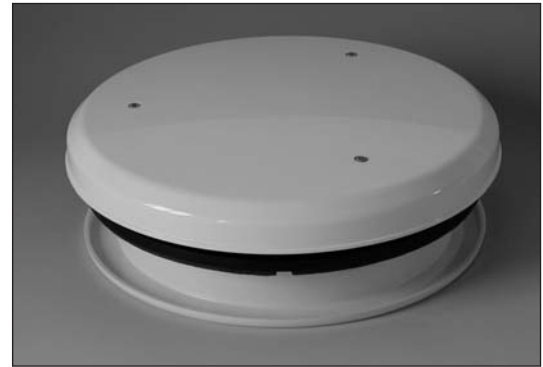


<b>2541/352700</b>	<b>Grill Cover</b> White ABS - Ø270mm x 4mm
--------------------	------------------------------------------------



		<b>'PERSONAL' CO-AXIAL FAN</b> Manufactured from powder coated steel through-out. Suitable for screw/bolt fixing (screws supplied). Two speed motor turns 152.4mm (6") blades @ 1500 or 3000rpm moving 7m <sup>3</sup> or 15m <sup>3</sup> per hour.						
		A	B	C	D	E	F	G
<b>2539/512</b>					<b>Weight 1.1kg/2.4lb</b>			
METRIC (mm)	225	160	125	60	190	70		
IMPERIAL (ins)	8.86	6.30	4.92	2.36	7.48	2.76		

		SEMI-RECESSED ROOF-VENT							
		'Mira' approved. Supplied with 40mm inner trim ring (see below), cutout template & dome. Dome secured with stainless steel 'Torx' screws'							
		A	B	C	D	E	F	G	H
2539/012	12v - White dome	Weight 2.2kg/4.9lb							
2539/024	24v - White dome	Weight 2.2kg/4.9lb							
2540/1240	12v - Yellow dome	Weight 2.2kg/4.9lb							
2540/2440	24v - Yellow dome	Weight 2.2kg/4.9lb							
METRIC (mm)		320	95.0	65.0	240	8.00			
IMPERIAL (ins)		12.6	3.74	2.55	9.50	0.32			



**PACET ROOF VENTS**  
Low Profile, Positive Ventilation

		SEMI-RECESSED ROOF-VENT							
		'Mira' approved. Supplied with 40mm inner trim ring (see below), cutout template & dome. Dome secured with stainless steel 'Torx' screws'							
		A	B	C	D	E	F	G	H
2550/1240	12v - White dome	Weight 2.2kg/4.9lb							
2550/2440	24v - White dome	Weight 2.2kg/4.9lb							
2560/1240	12v - Yellow dome	Weight 2.2kg/4.9lb							
2560/2440	24v - Yellow dome	Weight 2.2kg/4.9lb							
METRIC (mm)		320	95.0	65.0	240	8.00	362		
IMPERIAL (ins)		12.6	3.74	2.55	9.50	0.32	14.3		



**PACET ROOF VENTS**  
Low Profile, Positive Ventilation

		INTERIOR TRIM RING							
		White ABS. Supplied with 2539, 2540, 2550 & 2560 vents.							
		A	B	C	D	E	F	G	H
METRIC (mm)		302	250	42.0	9.00				
IMPERIAL (ins)		11.89	9.84	1.65	0.35				

### Specifications:

Dome	UV stable Polycarbonate White or Yellow (RAL 1016)
Shroud	Nylon & glass fibre
Blade	Nylon & glass fibre
Trim Ring	White ABS (black available on request)
Motor/Fixings	316 Stainless steel
Aperture required:	242mm
Above roof line:	65mm approx depending on seal compression.
Motor:	12V or 24V; 80 Watt
Amp draw:	4.5 @ 12V & 3.0 @ 24V
Extraction:	1697m <sup>3</sup> /h max

MIRA approved and fitted by OEMs on vehicles used by police, ambulance services, community transport, bus manufacturers, and due to highly efficient extraction rates - particularly suitable for any vehicles carrying livestock. Other applications include off-road vehicles, agricultural vehicles and motorhomes as well as marine and inland water craft.

With key features such as a built-in safety mesh (protecting fingers & hair!), a unique chassis construction with a moulded flexible seal to eliminate cold drafts when not in use (without sacrificing air extraction performance) and a long life motor with twin ball bearings all Pacet motorised vents are supplied pre-assembled to aid easy 1 man installation.

All vents are supplied with a 40mm, white ABS, interior trim ring which will suit most applications with roof thicknesses between 33mm and 52mm. A 10mm trim ring is available to suit single skin roof applications and for vehicles with a more substantial roof or a false ceiling a 60mm ring is available on request.

Full fitting instructions and a cutout template are supplied with each vent along with self adhesive foam inserts for use on vehicles with a ridged roof.



		A				B				C				D				E				F				G				H			
		<b>H593A492</b>				<b>Complete assembly</b>				<b>Weight 2.7kg/6lb</b>																							
METRIC (mm)		575				425				95																							
IMPERIAL (ins)		22.6				16.7				3.74																							
		350 mm (13.8") x 500 mm (19.7") cut out.																															
		<b>H593A493</b>				<b>Complete assembly</b>				<b>Weight 3.9kg/8.6lb</b>																							
		<b>H593B006</b>				<b>Mechanism only</b>																											
		<b>H593B021</b>				<b>Acrylic dome</b>																											
		<b>H593B022</b>				<b>Polycarbonate dome</b>																											
METRIC (mm)		575				575				95																							
IMPERIAL (ins)		22.6				22.6				3.74																							
		500 mm (19.7") x 500 mm (19.7") cut out.																															

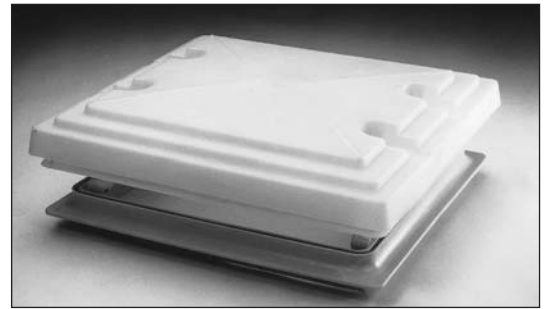


		A				B				C				D				E				F				G				H			
		<b>H593C156</b>				<b>Mechanism only</b>				<b>Weight 1.6kg/3.5lb</b>																							
		<b>H593C153</b>				<b>Opal dome</b>				<b>Weight 1.1kg/2.4lb</b>																							
		<b>H593C151</b>				<b>Tinted Grey dome</b>				<b>Weight 1.1kg/2.4lb</b>																							
METRIC (mm)		579				579				82.0				147																			
IMPERIAL (ins)		22.8				22.8				3.23				5.79																			
		500 mm (19.7") x 500 mm. (19.7") cut out.																															
		<b>H593C158</b>				<b>Mechanism only</b>				<b>Weight 1.4kg/3.1lb</b>																							
		<b>H593P500</b>				<b>Opal dome</b>				<b>Weight 860g/1.9lb</b>																							
		<b>H593C152</b>				<b>Tinted Grey dome</b>				<b>Weight 860g/1.9lb</b>																							
METRIC (mm)		579				424				97.0				162																			
IMPERIAL (ins)		22.8				16.7				3.82				6.38																			
		350 mm (13.8") x 500 mm (19.7") cut out.																															

**ROOF LIGHT & VENTILATOR**

Cream plastic base with opalescent plastic top projection;  
open = 127mm (5").  
Closed (shown) = Dim C.  
Cut out = 360mm (14.2") x 320mm (12.6").

	A	B	C	D	E	F	G	H
<b>0638/004</b>	<b>Weight 1.31kg/2.9lb</b>							
METRIC (mm)	420	380	76.0					
IMPERIAL (ins)	16.5	15.0	3.00					
<b>0638/005</b>	<b>Fly screen</b>							



**ROOF HATCH**

Grey powder coated aluminium mechanism & inner trim ring.  
Flat tinted glass top.  
Suits roof thickness' from 45 to 65mm.

	A	B	C	D	E	F	G	H
<b>H5930085</b>	<b>Roof hatch</b>				<b>Weight 9.5kg/21lb</b>			
METRIC (mm)	591	591	24.0	69.0				
IMPERIAL (ins)	23.3	23.3	0.95	2.72				
500 mm (19.7") x 500 mm (19.7") cut out.								
<b>H5930100</b>	<b>Roof hatch</b>				<b>Weight 14.8kg/31lb</b>			
METRIC (mm)	1027	591	24.0	69.0				
IMPERIAL (ins)	40.4	23.3	0.95	2.72				
970 mm (38.2") x 540 mm (21.3") cut out. Supplied with emergency break-glass hammer								



**ROOF HATCH**

Grey ABS mechanism & inner trim ring.  
Flat tinted glass top.  
Suits roof thickness' from 30mm to 70mm.  
Inner frame dismantles for easy installation.  
Full fitting instructions supplied

	A	B	C	D	E	F	G	H
<b>9705/5000</b>	<b>Manual roof hatch</b>				<b>Weight 10kg/22lb</b>			
<b>9705/905000E</b>	<b>24v Electric roof hatch</b>				<b>Weight 10kg/22lb</b>			
METRIC (mm)	640	640	40.0	84.0				
IMPERIAL (ins)	25.2	25.2	1.58	3.31				
530 mm (20.9") x 530 mm (20.9") cut out.								
<b>9705/6000</b>	<b>Manual roof hatch</b>				<b>Weight 15kg/33lb</b>			
<b>9705/906000E</b>	<b>24v Electric roof hatch</b>				<b>Weight 15kg/33lb</b>			
METRIC (mm)	640	1080	40.0	84.0				
IMPERIAL (ins)	25.2	42.6	1.58	3.31				
530 mm (20.9") x 970 mm (38.2") cut out. Supplied with emergency break-glass hammer								
<b>9705/306000</b>	<b>Control panel, for electric roof hatches</b>							



Inset shows control panel 9705/306000, for use with electric roof hatches.