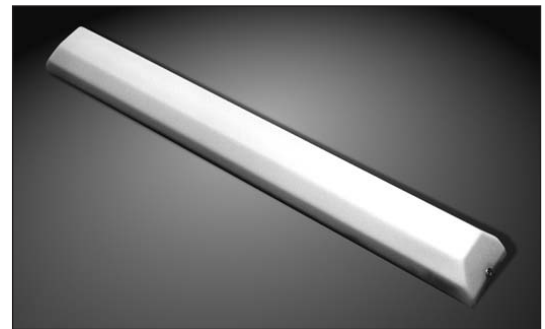


Fluorescent Lamps

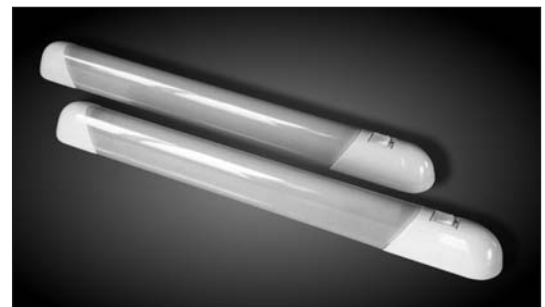
		A	B	C	D	E	F	G	H
FLUORESCENT LAMP		Surface mounting with tube and wiring tails. * Complete with switch.							
5650/001 *	12v 8w Tube	Weight 190g/6.7oz							
METRIC (mm)		380	32	40					
IMPERIAL (ins)		15	1.26	1.58					
5652/001	24v 13w Tube	Weight 270g/9.5oz							
METRIC (mm)		610	32	40					
IMPERIAL (ins)		24	1.26	1.58					



		A	B	C	D	E	F	G	H
FLUORESCENT LAMP		Surface mounting with tube and wiring tails. No switch.							
5610/001	12v 20w Tube	Weight 750g/1.7lb							
5610/002	24v 20w Tube								
METRIC (mm)		710	54	87					
IMPERIAL (ins)		28	2.13	3.43					



		A	B	C	D	E	F	G	H
FLUORESCENT LAMP		Surface mounting. Complete with a single tube & integral switch.							
5641/001	12v 8w tube	Weight 230g/8.1oz							
METRIC (mm)		426	35	45					
IMPERIAL (ins)		16.8	1.38	1.77					

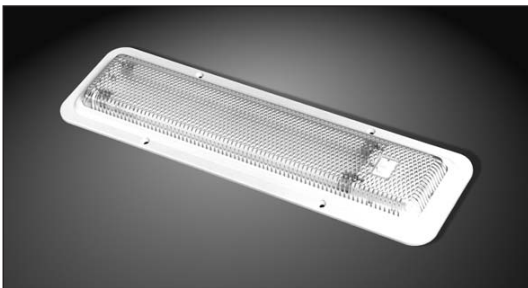


		A	B	C	D	E	F	G	H
FLUORESCENT LAMP		Surface mounting with tube and wiring tails. Polycarbonate lens with a pressed aluminium back-plate.							
5612/001	12v, 2 x 8w, with switch	Weight 380g/13.4oz							
5612/002	12v, 2 x 8w, no switch								
5612/003	24v, 2 x 8w, with switch								
5612/004	24v, 2 x 8w, no switch								
METRIC (mm)		376	29	86	362	4			
IMPERIAL (ins)		14.8	1.14	3.39	14.3	0.16			



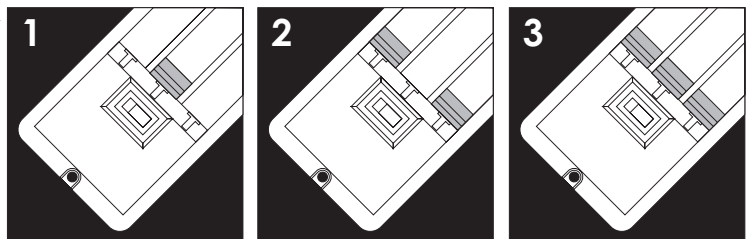


		A	B	C	D	E	F	G	H
5640/001		12v 8w, one tube				Weight 300g/10.6oz			
5640/002		12v 16w, two tubes							
METRIC (mm)		381	24	78	367	4.5			
IMPERIAL (ins)		15.0	0.95	3.07	14.5	0.18			



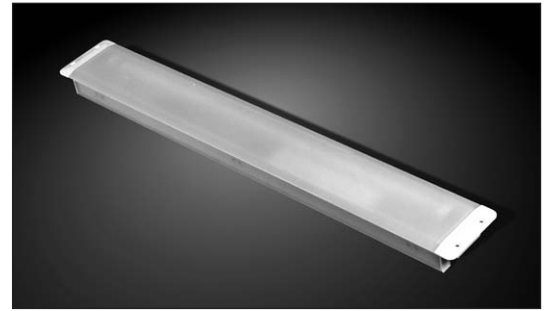
		A	B	C	D	E	F	G	H
5637/001		12v 8w (Single tube)				Weight 285g/10oz			
5637/002		12v 16w (Two tubes)				Weight 310g/11oz			
5637/0021		24v 16w (Two tubes)				Weight 310g/11oz			
5637/003		12v 24w (Three tubes)				Weight 337g/12oz			
METRIC (mm)		381	24	78	117	420			
IMPERIAL (ins)		15	0.95	3.07	4.61	16.5			
5637/004		Ivory, lamp surround							
5637/005		White, lamp surround							

A new concept in lighting which enables 1, 2 or 3 tubes to be used in the same fitting to change light levels & ensure reliability when tubes fail.



		A	B	C	D	E	F	G	H
5608/002		12v 16w, Two tubes				Weight 540g/1.2lb			
METRIC (mm)		364	34	118					
IMPERIAL (ins)		14.3	1.34	4.65					

		A	B	C	D	E	F	G	H	
5639/002		24 Volt, 18w				Weight 1.2kg/2.7lb				
METRIC	(mm)	715	46	100	6	680	50	4.5		
IMPERIAL	(ins)	28.2	1.81	3.94	0.24	26.8	1.97	0.18		



A combination halogen/fluorescent fitting for use in insulated vehicles or in applications where temperatures may vary frequently between -25°C and +40°C. At cold temperatures halogen lighting is used to combat condensation fog, but as the temperature inside the unit rises, it switches over to fluorescent operation. Sealed to IP65 to enable high pressure cleaning.

		A	B	C	D	E	F	G	H	
5614/012		12v (1.8A max)				Weight 230g/8.1oz				
5614/024		24v (900mA max)				Weight 230g/8.1oz				
METRIC	(mm)	164	40.0	8.0	103	50.0	144	121	82.0	
IMPERIAL	(ins)	6.46	1.58	0.32	4.06	1.97	5.67	4.76	3.23	



		A	B	C	D	E	F	G	H	
5609/001		12v 16w Two tubes				Weight 500g/1.1lb				
5609/002		24v 16w Two tubes								
METRIC	(mm)	365	20	115	20	310	80			
IMPERIAL	(ins)	14.4	0.8	4.53	0.8	12.2	3.15			
5611/001		12v 20w Single tube				Weight 1.41kg/3.1lb				
5611/002		24v 20w Single tube								
METRIC	(mm)	723	18	190	36	662	135			
IMPERIAL	(ins)	28.5	0.71	7.5	1.42	26.1	5.32			

