

WING STAY BRACKET CLAMPS

A unique bracket clamp system designed for use with the new generation 6777 mudguards (refer g1):

- Lightweight plastic design
- Unique stylish appearance
- No unsightly nuts & bolts
- Bracket clamps hold the stay off the mudguard thus eliminating water traps - reducing rust problems
- Quick & easy to fit - faster routine maintenance
- Innovative clamping action 'Grips' the mudguard securely.

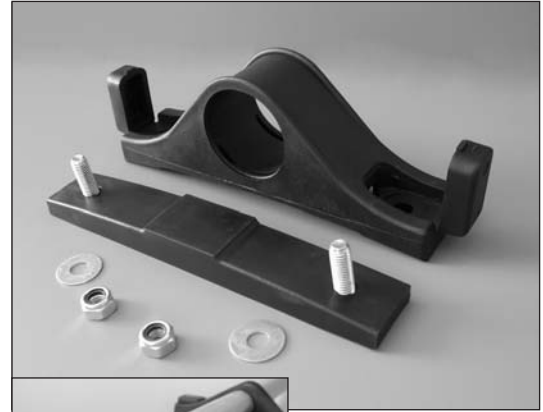
6781/00354 Suitable for Ø35mm tubes

Complete kit suitable for one mudguard includes 4 bracket sets.

6781/00424 Suitable for Ø42mm tubes

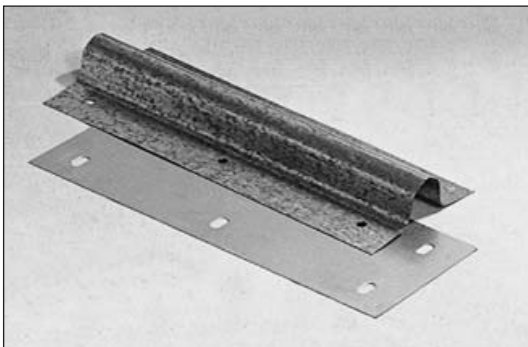
Complete kit suitable for one mudguard includes 4 bracket sets.

Main image shows one complete set, each assembly consists of 4 sets. Inset shows brackets fitted to wing stay (not included - refer g5).



		'UNIFIX' MUDGUARD BRACKET CLAMPS							
		Black, polyamide plastic. Fits to mudguards by only one bolt. Adjustable to fit stays from Ø32mm to Ø42mm. Full fitting instructions supplied.							
		A	B	C	D	E	F	G	H
3027/005		Pack of 4				Weight 110g/3.9oz			
METRIC	(mm)	90.0	44.0	34.0	68.0	15.0			
IMPERIAL	(ins)	3.54	1.73	1.34	2.68	0.59			





U BOLT CLAMP KITS

A complete kit contains enough components to fit one pair of mudguards. Each kit consists of:

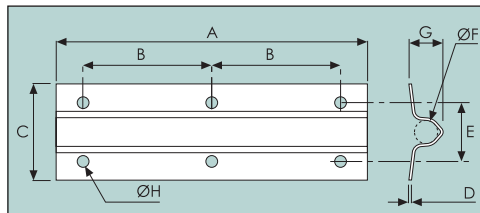
- 4 x galvanised steel back plates
- 8 x zinc plated steel U bolts
- 8 x black neoprene, anti-slip sleeves
- 16 x flat steel washers
- 16 x nyloc nuts

6777/0035 Suits mudguards up to 570mm wide
6777/0037 Suits mudguards over 570mm wide

Assemblies to suit Ø35mm wingstays

6777/0042 Suits mudguards up to 570mm
6777/0044 Suits mudguards over 570mm

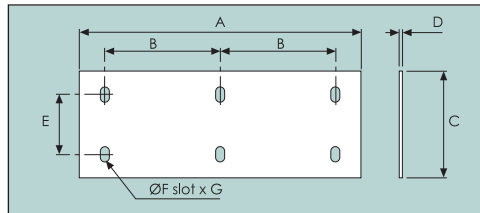
Assemblies to suit Ø42mm wingstays



SADDLE BRACKET

Galvanised, mild steel.
For use with 3030/022
backplate.
To suit Ø34mm stays.

	A	B	C	D	E	F	G	H
3030/021	Weight 370g/13oz							
METRIC (mm)	400	165	109	1.00	71.0	34.0	36.0	9.00
IMPERIAL (ins)	15.8	6.50	4.29	0.04	2.80	1.34	1.42	0.35



BACKPLATE

Galvanised, mild steel.
For use with 3030/021
saddle bracket.

	A	B	C	D	E	F	G	H
3030/022	Weight 370g/13oz							
METRIC (mm)	400	165	150	1.00	66.0	10.0	20.0	
IMPERIAL (ins)	15.8	6.50	5.91	0.04	2.60	0.39	0.79	